



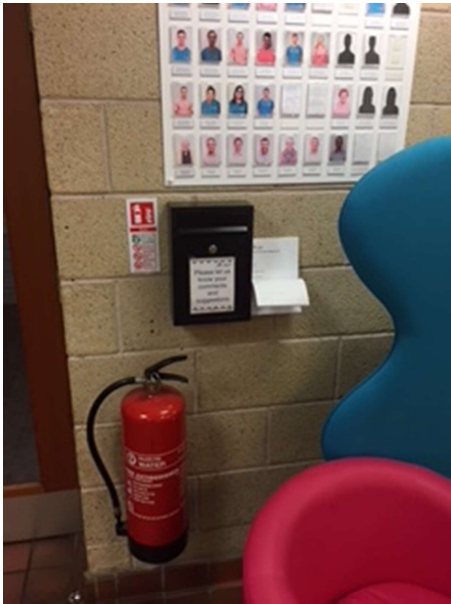
# Accessibility Guide

Prepared August 2018

## Entrance/Reception area

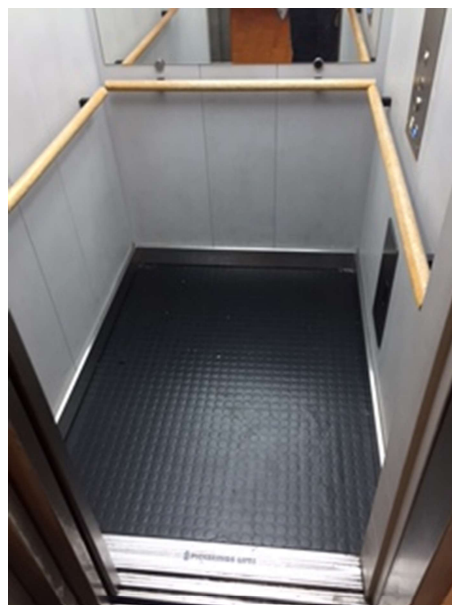
The front entrance has two double doors with automatic closers and they are push to enter and pull to exit. The narrowest point past the reception desk to allow access is 1450mm.

- Front door single door width – 950mm
- Front door double door width – 1800mm
- Handles for doors height – 1000mm
- Reception desk height – 840mm
- Comments and suggestion box height – 1260mm



## **Elevator:**

- External elevator call button height – 1040mm
- Elevator door width – 800mm
- Elevator depth from door to rear rail – 1410mm
- Internal elevator button height – 1080mm
- Max elevator load weight – 630KG



## **Car Parking**

There are plenty of spaces for car parking and 4 accessible spaces nearest to the building. There are 2 areas with a lowered kerb both measuring 1820mm wide. There is then a 20 meter walk from the end of the car park to the front entrance.

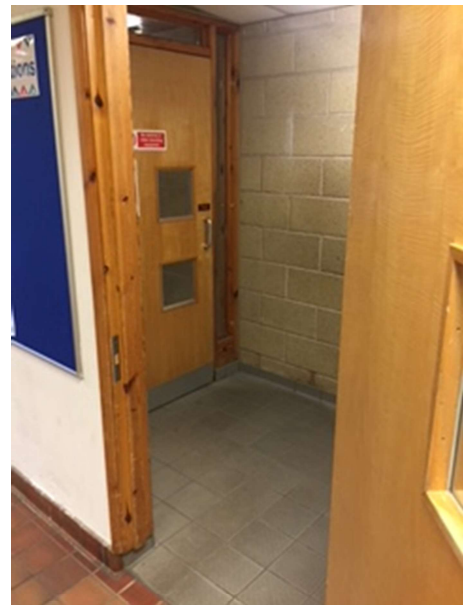


## **Poolside Area**

### **Poolside access:**

There are two doors to access the swimming pool area they are both on automatic closers and are both pull doors to enter and push doors to exit with handles at 1000mm. They are fairly close together and there is a 90 degree turn between them.

- First entrance door width - 900mm
- Second entrance door width - 960mm



## Poolpod:

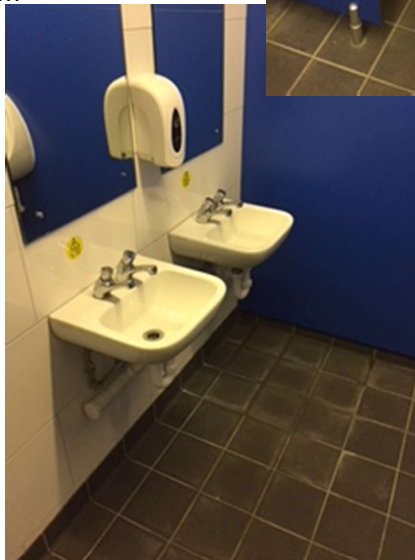
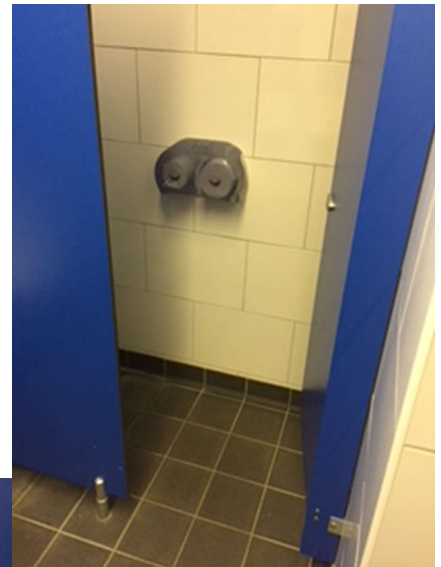
Our Poolpod provides quick and simple access to our swimming pool for wheel chair users and swimmers with difficulty using stairs. Installation of an enhanced Poolpod pool lift system has made our swimming pool accessible to more children and adults with a much wider range of access needs. Ask staff for further details when wishing to use it.



## Male Poolside Toilets:

This door has an automatic closer on it and is a push door to enter and a pull door to exit.

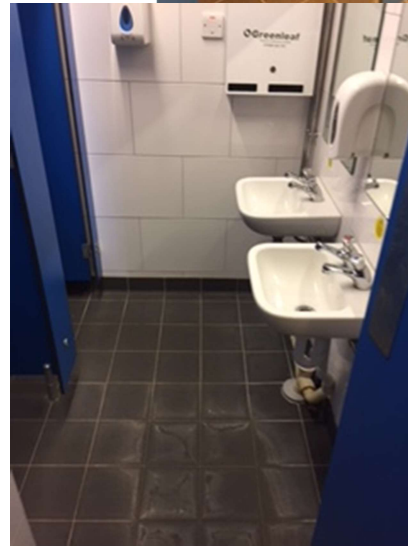
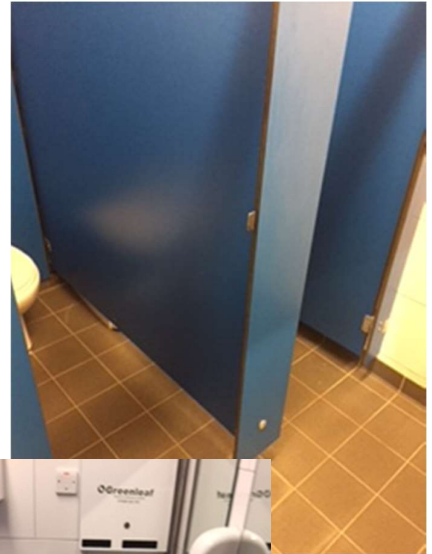
- Entrance door width - 760mm
- Exit door handle height - 1000mm
- Sink Height - 770mm
- Toilet bowl Height - 420mm
- Flush handle height - 900mm
- Cubicle door width - 560mm
- Cubicle door lock - 1000mm
- Toilet roll dispenser height - 980mm
- Soap dispenser height - 1080mm
- Hand dryer height - 1260mm
- Urinal Height - 620mm



### Female Poolside Toilets:

This door has an automatic closer on it and is a push door to enter and a pull door to exit.

- Entrance door width - 760mm
- Exit door handle height - 1000mm
- Sink Height - 780mm
- Toilet bowl Height - 420mm
- Flush handle height - 900mm
- Cubicle door width - 535mm
- Cubicle door lock - 1000mm
- Toilet roll dispenser height - 990mm
- Soap dispenser height - 1040mm
- Hand dryer height - 1250mm
- Sanitary product dispenser - 1660mm



### Accessible Poolside Toilet:

This door swings freely and is a push door to enter and a pull door to exit. It also has an Emergency Alarm with pull cord.

- Entrance door width - 850mm
- Exit door handle height and lock - 1000mm
- Sink Height - 750mm
- Toilet bowl Height - 420mm
- Flush handle height - 1130mm
- Horizontal railing height - 690mm
- Vertical Railing bottom to top - 800-1400mm
- Toilet roll dispenser height - 1040mm
- Soap dispenser height - 1000mm
- Hand towel dispenser height - 1280mm

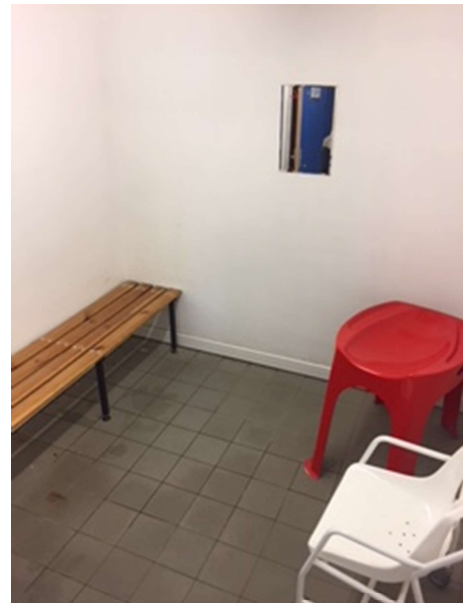
### **Accessible/Family Change area on poolside:**

This is a larger changing area with a long bench and some more space for assisted changing or families changing together, it is equipped with a chair with wheels, a baby changer and a cot it also has a pull cord Emergency Alarm installed.

- Entrance Door Width – 750mm
- Bench height - 460mm
- Baby changer height – 680mm

We also have 2 chairs for use with our Pool Pod pool hoist that can be moved to this changing area if required.

- Regular cubical door width – 550mm
- Large cubical door width – 800mm



### **Poolside showers/steam room/sauna:**

There are showers by the pool for use before entering the water and there are showers in the shower room for the use of shampoos and soaps for afterwards.

- Shower button height - 1260mm
- Shower entrance width – 790mm

There is also a steam room and sauna for use during public sessions both of these are pull doors to enter and push doors to exit with freely swinging doors.

- Door handle height - 900mm
- Bench height - 460mm



## **Changing Room facilities**

### **Male changing room:**

This door has an automatic closer on it and is a push door to enter and a pull door to exit. It has two toilets, one accessible the other not. The narrowest point to gain access to the changing area is 950mm.

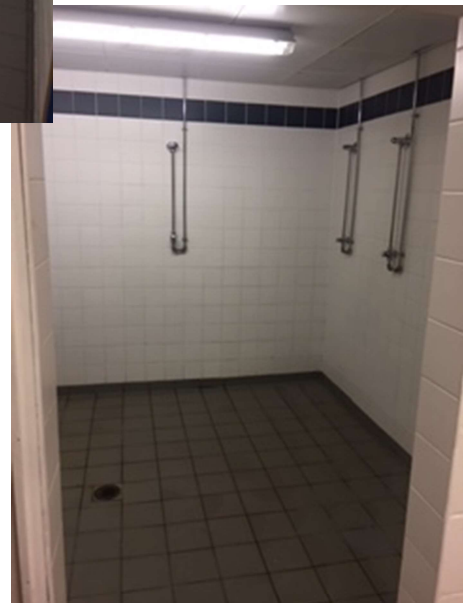
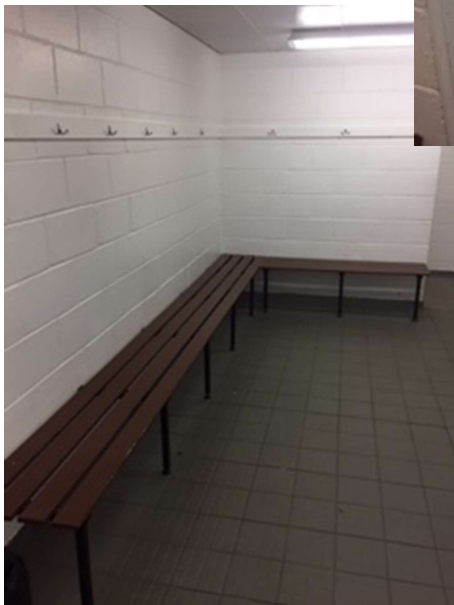
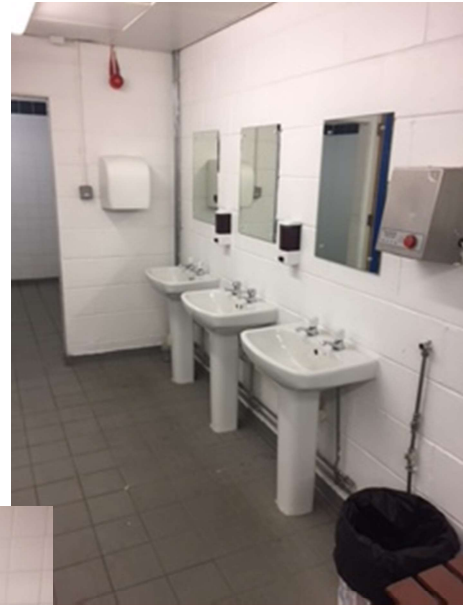
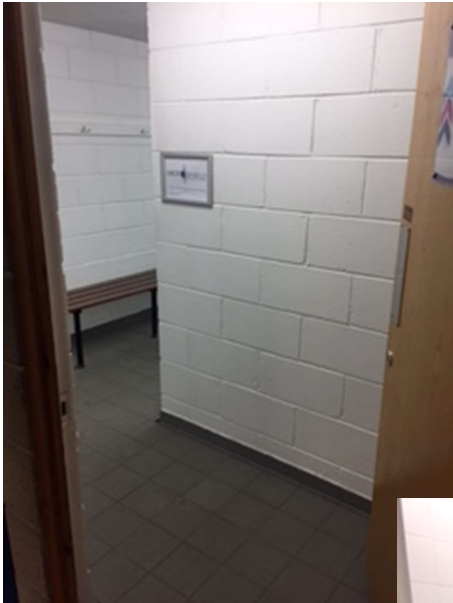
- Entrance door width – 980mm
- Exit door handle height – 1180mm
- Sink Height – 810mm
- Accessible sink height – 760mm
- Toilet bowl Height – 430mm
- Accessible toilet horizontal railing height (x2) - 700mm
- Accessible toilet vertical Railing bottom to top – 800-1400mm
- Flush handle height – 670mm
- Accessible toilet flush handle height – 1200mm
- Accessible Cubicle door width – 890mm
- Cubicle door width – 670mm
- Cubicle door lock height – 1000mm
- Toilet roll dispenser height – 960mm
- Soap dispenser height – 1080mm
- Hand towel dispenser height – 1240mm
- Bench Height – 450mm
- Shower push button Height – 1220mm
- Shower entrance way width – 870mm
- Electric hand dryer – 1340mm
- Clothes hangers – 1640mm

### **Female changing rooms:**

This door has an automatic closer on it and is a push door to enter and a pull door to exit. It has two toilets, one accessible the other not. The narrowest point to gain access to the changing area is 970mm.

- Entrance door width – 980mm
- Exit door handle height – 1200mm
- Sink Height – 800mm
- Accessible sink height – 750mm
- Toilet bowl Height – 430mm
- Accessible toilet horizontal railing height (x2) - 700mm
- Accessible toilet vertical Railing bottom to top – 800-1400mm
- Flush handle height – 670mm
- Accessible toilet flush handle height – 1200mm
- Accessible Cubicle door width – 890mm
- Cubicle door width – 670mm
- Cubicle door lock height – 1000mm
- Toilet roll dispenser height – 960mm
- Soap dispenser height – 1080mm
- Hand towel dispenser height – 1230mm
- Bench Height – 450mm
- Shower push button Height – 1300mm
- Shower entrance way width – 870mm

- Electric hand dryer – 13400mm
- Clothes hangers – 1620mm
- Shower cubical door width – 500mm
- Shower cubical lock height – 1100mm

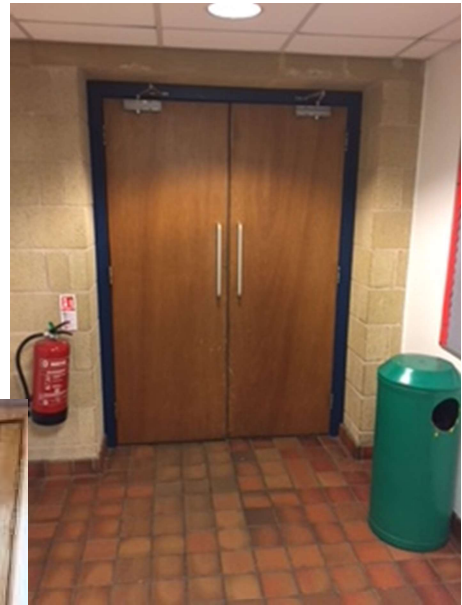




## Activity Areas

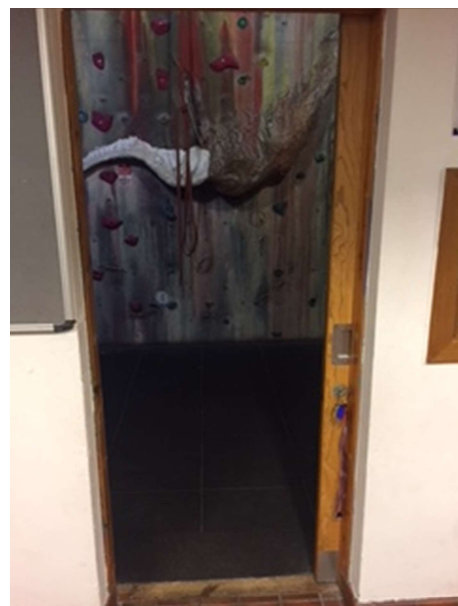
### **Sports Hall:**

There are two entrances to the hall the main one is on automatic closers and is pull to enter and push to exit with both doors open it is 1320mm wide. The second side entrance is again on automatic closers and is pull to enter and push to exit with both doors open this is 1120mm.



### **Climbing Wall:**

There is one entrance to the climbing wall it is a sliding door with a width of 760mm when fully open. There is also a sloped area of mat for easier access through the door.



### Dance studio/conditioning gym:

There are 3 door on route to the dance studio the first is 890mm or you can skip this door by going through the sports halls 1120mm door, the second 960mm and the final is a double door that is 840mm or 1670mm with both doors open. All of these doors are on automatic closers and are push to enter and pull to exit with handle heights of 1100mm. There is a matted area with a small slope on it to access some of the machines



### Fitness suite:

There is a double door to access this area with one door open it is 800mm wide and with both it is 1600mm wide. There are several cardiovascular and resistance machines as well as a selection of free weights. Two of the upper body resistance machine have full wheelchair access and there is full access to all of the free weight dumbbells. The narrowest gap in the fitness suite is 450mm however this can be avoided without restricting access to equipment. After that the narrowest gap is 800mm which would restrict access to some of our equipment.

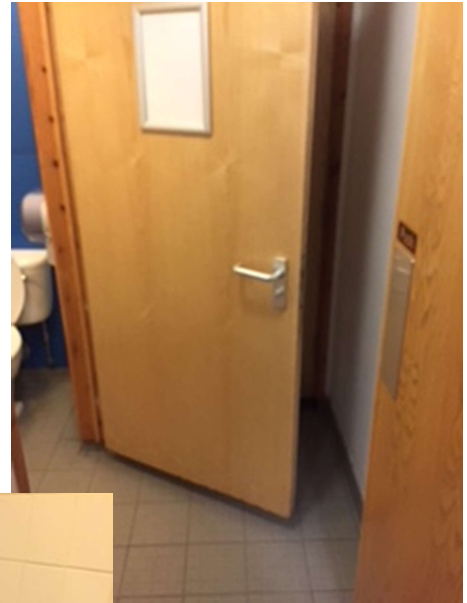


## Lower corridor toilets

### **Lower Female Toilet:**

This area has two doors and they have automatic closers on them they are one push door and one pull door to enter.

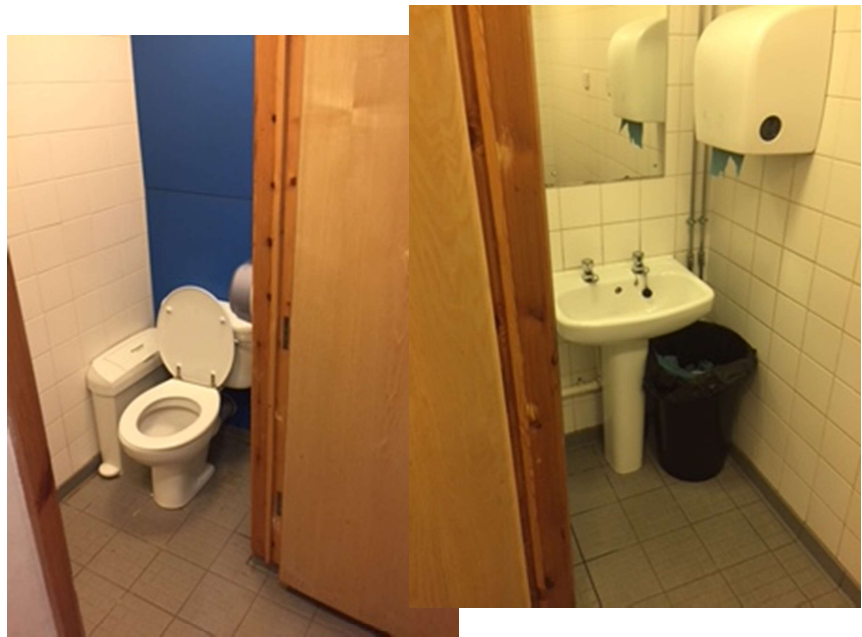
- 1<sup>st</sup> entrance door width - 760mm
- 2<sup>nd</sup> entrance door width - 760mm
- Exit door handle/lock height - 1000mm
- Room width – 850mm
- Sink Height - 810mm
- Toilet bowl Height - 430mm
- Flush handle height - 660mm
- Toilet roll dispenser height - 960mm
- Soap dispenser height - 1100mm
- Hand towel dispenser height - 1340mm



This area has two doors and they have automatic closers on them they are one push door and one pull door to enter.

- 1<sup>st</sup> entrance door width - 760mm
- 2<sup>nd</sup> entrance door width - 760mm
- Exit door handle/lock height - 1000mm
- Room width – 850mm
- Sink Height - 800mm
- Toilet bowl Height - 430mm
- Flush handle height - 770mm
- Toilet roll dispenser height - 960mm
- Soap dispenser height - 1100mm
- Hand towel dispenser height - 1300mm

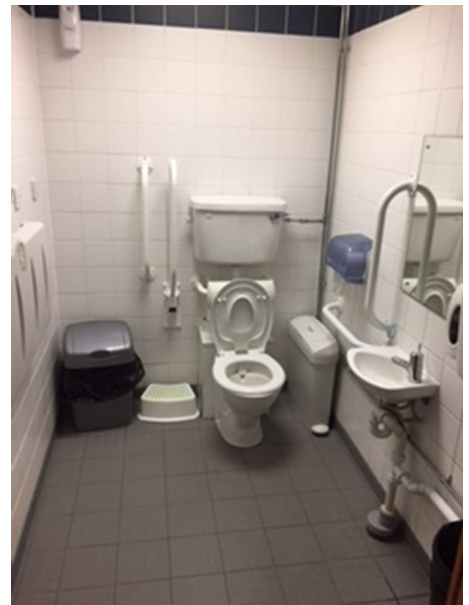




**Lower Accessible toilet:**

This door swings freely and is a pull door to enter and a push door to exit. It also has an Emergency Alarm with pull cord.

- Entrance door width - 860mm
- Exit door handle height and lock - 1000mm
- Sink Height - 740mm
- Toilet bowl Height - 440mm
- Flush handle height - 1200mm
- 2x Horizontal railing height – 650/700mm
- 2x Vertical Railing bottom to top - 800-1400/850-1450mm
- Horizontal door railing height – 700mm
- Toilet roll dispenser height - 1010mm
- Soap dispenser height - 980mm
- Hand towel dispenser height - 1000mm
- Baby changing unit height – 920mm
- Foot Stool – 150mm



## **Upstairs:**

Accessible by the elevator or a flight of stair the leisure centre only has two floors, the ground floor and the 1<sup>st</sup> floor.

### **Café area:**

- Servery height – 1100mm
- Table height – 730mm
- Chair seat height – 460mm
- High chair height – 730mm



### **Woodland Kingdom Indoor Soft play:**

The soft play has a double door and is pull to enter and push to exit, it operates on automatic closers.

- Entrance door width – single door – 800mm, both doors – 1600mm
- Door handle – 1100mm
- Door lock – 1440mm
- Internal gate to play area – 920mm
- Narrowest entry point of play frames – 560mm
- Table height – 720mm
- Chair seat height – 450mm
- High chairs – 730mm



### Callander Indoor Arena (C.I.A):

The C.I.A. has a double door and is pull to enter and push to exit, it operates on automatic closers.

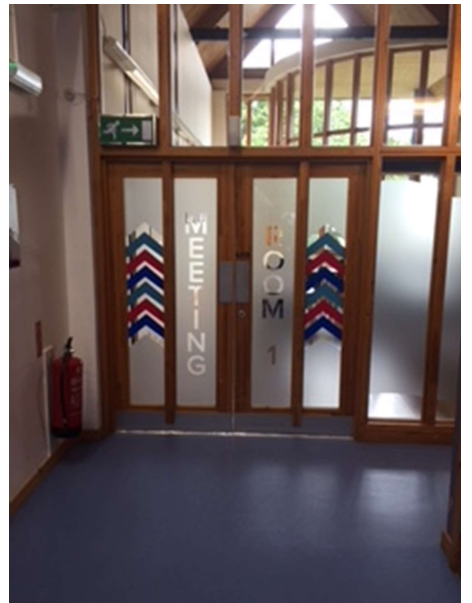
- Entrance door width – single door – 800mm, both doors – 1600mm
- Door handle – 1100mm
- Door lock – 1440mm



### Meeting room 1:

The Meeting room 1 has a double door and is push to enter and pull to exit, it operates on automatic closers.

- Entrance door width – single door – 880mm, both doors – 1740mm
- Door handle – 1100mm



### Meeting room 2/Spin studio:

The Meeting room 2 has a single door and is push to enter and pull to exit, it operates on an automatic closer.

- Entrance door width – 860mm
- Door handle – 1000mm

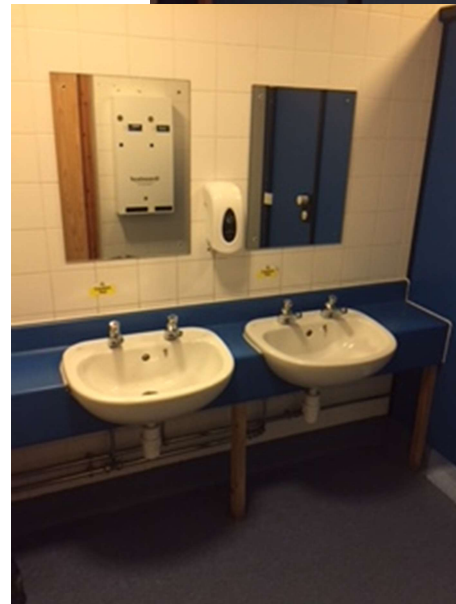
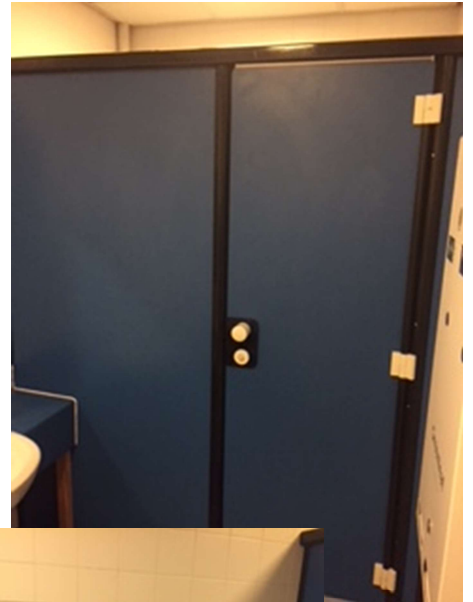


## Upper corridor toilets

### **Upper Female Toilet:**

This area has two doors and they have automatic closers on them they are both push doors to enter and pull to exit.

- 1<sup>st</sup> entrance door width – 750mm
- 2<sup>nd</sup> entrance door width - 760mm
- Exit door handle/lock height - 1100mm
- Electric hand dryer height – 1320mm
- Sink Height - 800mm
- Toilet cubical door width – 550mm
- Toilet bowl Height - 400mm
- Flush handle height - 900mm
- Toilet roll dispenser height – 1120mm
- Soap dispenser height - 1130mm
- Hand towel dispenser height - 1250mm
- Sanitary product dispenser – 1560mm



### **Upper Male toilet:**

This area has two doors and they have automatic closers on them they are both push doors to enter and pull to exit.

- 1<sup>st</sup> entrance door width – 750mm
- 2<sup>nd</sup> entrance door width - 780mm
- Exit door handle/lock height - 1100mm
- Electric hand dryer height – 1300mm
- Urinal height – 630mm
- Sink Height - 800mm
- Toilet cubical door width – 550mm
- Toilet bowl Height - 400mm
- Flush handle height - 930mm
- Toilet roll dispenser height – 1120mm
- Soap dispenser height - 1040mm
- Hand towel dispenser height - 1230mm



### Upper Accessible toilet:

This door swings freely and is a pull door to enter and a push door to exit. It also has an Emergency Alarm with pull cord.

- Entrance door width - 780mm
- Exit door handle height and lock - 1000mm
- Sink Height - 720mm
- Toilet bowl Height - 430mm
- Flush handle height - 1160mm
- 2x Horizontal railing height – 700mm
- 2x Vertical Railing bottom to top - 850-1450mm
- Horizontal door railing height – 700mm
- Toilet roll dispenser height - 1000mm
- Soap dispenser height - 900mm
- Hand towel dispenser height - 930mm
- Baby changing unit height – 880mm
- Foot Stool – 150mm

